



# ***Refin<sup>ish</sup> Coatings***

PERFORMANCE COATINGS AND COMPOUNDS



**1-216-398-5100**  
**[refinishcoatings.com](http://refinishcoatings.com)**

 ***DuraMend***

## **Notice**

RC manufacturers and sells specialty coatings, repair products and tools for the leather & vinyl repair markets, small leather goods manufacturing industry & automotive upholstery repair markets. Our industry commonly refers to the color coating applied to leather as “dye”, which in most cases is a urethane coating. Despite the terminology.

## **Safe Handling and Storage of your Products**

All products marketed by Refinish Coatings are designed and packaged to maintain their properties and application characteristics for up to one year after the date of shipping. This assurance, however, is subject to the condition that the products are stored in their original closed containers. It is recommend that for products exceeding the one-year shelf life date are re-inspected or tested prior to use.

*I.e. there are some exceptions to the one-year shelf life -- contact a technical representative for clarification*

The shelf life of any given product is dependent on the container, storage, and handling. All products should be stored in an environment between **32' F and 95' F**. Allowing your products to freeze or heat up excessively will diminish the quality and performance.

If you follow the simple guideline of storing your products in a safe & normal environment. Your product will work better and give a long use full life.

- \* Always store your products in a closed container
- \* Keep from excessive cold & heat
- \* Keep out of reach of children

### **\*\*\* Stir products well before using**

*Excessive shaking can introduce foam causing a diminished effect on the  
Film building properties of your coatings*

The recipient shall be responsible for satisfying the legal requirements of the local public authorities and/or government in respect to environmental legislation, fire risk and safety & health regulations.



## TABLE OF CONTENTS

	<b><u>Page</u></b>
Company & Ordering Information	4
Product Information & Sampling Program	5
Premium Top Coats	6 - 7
100 series C-Pigments	8 – 9
100 series C Metallic Pigments	9
300 series Pigment Blends	10
300 series Metallic Pigments Blends	11
300 series ST Pigments Blends	12
400 series Basecoat Blends	13 -14
500 series Basecoat Blends	15
One-Coat Garment System / Leather Balm	16
Basecoats & Primer Coats	17
Crosslinkers	18
Additives & Specialty Items	19 - 20
Cleaning & Leather Care Products	21 - 25
Repair Products, Tools & Containers	23 - 32
Bottles, Jars, Caps & Lids	33 - 35
Cloth Repair Items	36 - 38
Supplies, Color Cards & Pre-matched Colors	39
Training	40
Pre-matched Color Options	41



## ORDER INFORMATION

### **Terms**

- Orders must be paid by credit card when they are placed; payment terms of Net 15 or Net 30 may be requested pending credit approval.

### **Ordering Information**

- Orders can be placed over the phone or sent via fax or email or text message.

### **Return Policy**

- If an item needs to be returned, please contact us. Credit for approved returned items, less a 20% restocking fee, will be given once the item is received and inspected.

### **Shipping**

- Freight for orders is prepaid, and Shipping & Handling charges will be added to the invoice. Orders are shipped UPS Ground unless otherwise requested. October 31 through April 1 we are not responsible for ground shipments due to freezing temperatures.
- Bulk shipments must be shipped via common carrier and heated service during the months of October through April of any given year. Refinish Coatings is not responsible for frozen or damaged products if the customer does not pay for faster service or heated service.

### **Technical Support**

- For technical support regarding how to mix or apply pigments and topcoats, or assistance with any of our other products, please contact us at the phone numbers below.

### **Contact Info**

#### **For Orders:**

Phone: (216) 398-5100  
Fax: (216) 398-9114  
Email: [jerry@duramend.com](mailto:jerry@duramend.com)  
Text message: (216) 244-4760

#### **Technical Support:**

Phone: (216) 398-5100  
Email: [jerry@duramend.com](mailto:jerry@duramend.com)

#### **Mailing Address:**

9449 Brookpark Rd. Unit B  
Parma, OH. 44129



## **PRODUCT INFO**

RC Premium Coatings ♦ Dyes ♦ Paints

### **RC Pigment Series**

#### **C-Pigments**

The C-pigments are 100% pure pigments that are thicker, heavier and more concentrated than the I pigment line. The pigment ratio to clear coat (either basecoats or topcoats) is 7 -10% pigments to 90 -93% clear coat.

#### **I-Pigments (Available Upon Request)**

This line is intended for technicians who match colors by eye without the aid of a color computer. The I-pigments must be blended into a basecoat or topcoat. The ratio of pigment to basecoat or topcoat is 1:4 (20% pigment to 80% clear coat)

#### **Blended Basecoat**

Blended Basecoats are a mixture of C-pigments blended with the proper amount of #600 basecoat. These coatings are ready to mix blend just match the color to make the desired color and apply to leather, vinyl or plastic surfaces as usual.

Blended Basecoats can be crosslinked for added performance but is not required. Blended Basecoats should always be top coated with any of our Premium Top Coats

#### **Ready-Systems**

What is a Refinish Coatings "READY-SYSTEM?"

We define the ready-system as a system that has all of the components incorporated into the product so all the technician needs to do is stir, match the color (if required), add crosslinker (if required) apply the coating and dry.

This system was designed to help the technicians have a very simple system, which will save time and money on their restoration projects.

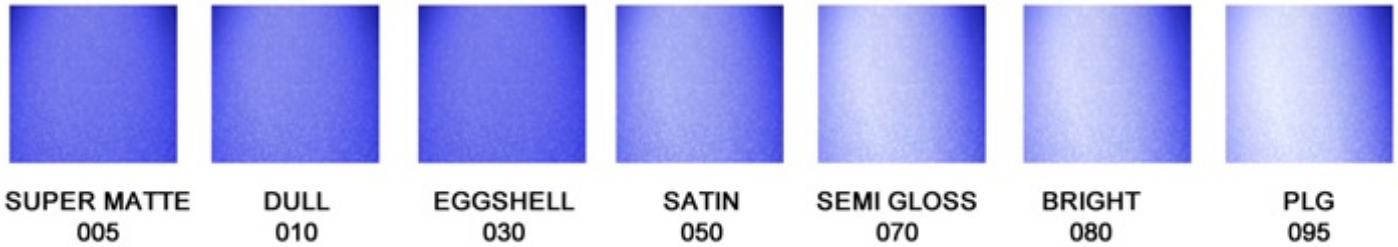
#### **Sampling Program**

Refinish Coatings will gladly offer samples to new customers and for new products. Generally, samples are smaller one-time use products; they are designed for our customers to test our products before purchasing. (Some specialty items can not be repackaged or sampled)

Samples are free of charge but we ask customers to pay freight costs

## Premium Top Coats

Our Premium Topcoats are a unique blend of components designed for maximum performance on Automotive & Furniture leathers & vinyl. The topcoats are a ready-to-spray system. Recommend all of our topcoats be crosslinked with either the 612 or 611 crosslinkers Pigments can be added by following the mixing ratios outlined in this guide



RC PRODUCT NO.	DISCRIPTION	CONTAINER SIZE	PRICE
005	Premium Top Coat – <b>SUPER MATTE</b> For best results crosslink with 612 @ 5%	Quart - 32 oz.	\$35
		Gal. - 128 oz.	\$88
010	Premium Top Coat - <b>DULL</b> Clear coatings can be used with pigments as a one-step system or applied as a clear coat over pigmented basecoats. For best results crosslink with 612 @ 5%	Quart - 32 oz.	\$30
		Gal. - 128 oz.	\$85
030	Premium Top Coat - <b>EGGSHELL</b> Clear coatings can be used with pigments as a one-step system or applied as a clear coat over pigmented basecoats. For best results crosslink with 612 @ 5%	Quart - 32 oz.	\$30
		Gal. - 128 oz.	\$85
050	Premium Top Coat - <b>SATIN 50/50</b> Clear coatings can be used with pigments as a one-step system or applied as a clear coat over pigmented basecoats. For best results crosslink with 612 @ 5%	Quart - 32 oz.	\$30
		Gal. - 128 oz.	\$85
060	Premium Top Coat - <b>HIGH WEAR SATIN TOPCOAT</b> Use this Urethane as a clear topcoat over refinished areas as a high wear protectant. For use on Steering Wheels, Arm Rests, Boat Cushions, Medical Furniture, Etc. For best results crosslink with 612 @ 5%	Quart - 32 oz.	\$33
		Gal. - 128 oz.	\$90
062	<b>RHINO COAT</b> - High solids / Very Hard coating designed for ridged substrates (Plastic, Metal, Wood, etc.) Can be pigmented up to 15% C-Pigments & 20% I pigments. For best results crosslink with 612 @ 5%	Quart - 32 oz.	\$33
		Gal. - 128 oz.	\$90

RC PRODUCT NO.	DISCRIPTION	CONTAINER SIZE	PRICE
<b>070</b>	Premium Top Coat – <b>SEMI BRIGHT</b> Clear coatings can be used with pigments as a one-step System or applied as a clear coat over pigmented basecoats. For best results crosslink with 612 @ 5%	Quart - 32 oz.	\$30
		Gal. - 128 oz.	\$85
<b>080</b>	Premium Top Coat - <b>BRIGHT</b> Clear coatings can be used with pigments as a one-step System or applied as a clear coat over pigmented basecoats. For best results crosslink with 612 @ 5%	Quart - 32 oz.	\$30
		Gal. - 128 oz.	\$85
<b>085</b>	<b>FURITURE HIGH GLOSS</b> Clear coatings can be used with pigments as a one-step system or applied as a clear coat over pigmented basecoats. For best results crosslink with 612 @ 5%	Quart - 32 oz.	\$30
		Gal. - 128 oz.	\$85
<b>095</b>	<b>PATENT LEATHER</b> Clear coatings can be used with pigments as a one-step system or applied as a clear coat over pigmented basecoats. For best results crosslink with <b>611</b> @ 5%	Quart - 32 oz.	\$30
		Gal. - 128 oz.	\$85
<b>099</b>	<b>CUSTOM SHEEN TOPCOAT</b> Custom Gloss blends - this topcoat is a blend of the 080 Bright & 010 Dull Premium Topcoats Gloss level is blended to your specifications - 70/30 80/20 etc. Can be used as a clear coat over pigmented basecoats or pigmented and used as a one-step system. For best results crosslink with 612 @ 5%	Gal. - 128 oz.	\$96



# 100 SERIES C-PIGMENTS



## 100 SERIES C-PIGMENTS

Concentrated pigments must be added to a clear coat system. Applying these pigments by themselves, will result in extremely poor performance. Pigment loading is typically 7 -10% of the total resin system (Topcoats or Basecoats).

**A 10% pigment load is also ONE PART C pigment to 9 PARTS clear coat (top or base coat).**

RC #	DISCRIPTION	PRICE PER CONTAINER		
		4 oz.	8 oz.	32 oz.
101	<b>C" PIGMENT STARTER KIT</b> See Page 9 for more details			\$85
110	White C-Pigment	-	\$25	\$70
111	Graphite C-Pigment	-	\$25	\$70
120	Black C-Pigment	-	\$25	\$70
130	Yellow Oxide C-Pigment	-	\$25	\$70
134	Lemon Yellow C-Pigment	\$18	\$30	\$75
140	Tangerine C-Pigment	-	\$30	\$75
141	Orange C-Pigment	\$18	\$30	\$75
150	Red Oxide C-Pigment	-	\$25	\$70

RC #	DISCRIPTION	PRICE PER CONTAINER		
		4 oz.	8 oz.	32 oz.
152	Scarlet C-Pigment	\$18	\$30	\$75
154	Bright Red C-Pigment	-	\$30	\$75
155	Ruby C-Pigment	\$20	\$35	\$100
156	Burgundy C-Pigment	\$18	\$30	\$75
158	Brick C-Pigment	\$20	\$35	\$100
160	Purple C-Pigment	\$18	\$30	\$75
170	Blue C-Pigment	\$18	\$30	\$75
180	Green C-Pigment	\$18	\$30	\$75
185	Dark Brown C-Pigment	\$15	\$25	\$70
<i>Not for color computer use.</i>				
<b>* 185 DK Brown never used to make color formulas</b>				



## STARTER KIT

## 101 "C" PIGMENT STARTER KIT



Use Our Concentrated Pigments to make our RC-148, AE-17 Colors along with other specialty clear coatings. Each pigment color is bottled in a Micro tipped plastic bottle with mixing discs for accurate and easy precise measuring. Each kit contains: 16 Bottles of "C" Pigment

### 6 – 2 oz. Bottles:

#110, #120, #130, #140, #150, #154

### 10 – 1 oz. Bottles:

#111, #134, #141, #152, #155, #156, #158, #160, #170, #180.

Also, 1 cleaning pin for bottle tips

**\$85.00**



## 100 Series C-Metallic Pigments

Pure Metallic Pigments must be mixed with a topcoat. The proper amount is up to 20 % pigment load or ONE PART pure metallic pigment to 4 PARTS TOPCOAT. We highly recommend using the 095 Patent Leather Gloss Topcoat. Applying these pigment without the proper amount of topcoat will result in poor performance. Adding a flattener or duller to these pigments will diminish the metallic effect.



PRODUCT NO.	DISCRIPTION	PRICE PER CONTAINER	
		4 oz.	8 oz.
190	Silver Metallic C-Pigment	\$20	\$35
192	Pearl Metallic C-Pigment	\$20	\$35
194	Gold Metallic C-Pigment	\$20	\$35
196	Bronze Metallic C-Pigment	\$20	\$35
198	Copper Metallic C-Pigment	\$20	\$35

## 300 SERIES PIGMENT BLENDS



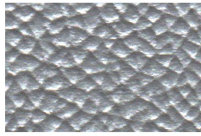
## 300 SERIES PIGMENT BLENDS

The 300 series pigment line is a correctly blended system designed as a “Ready-to-Spray” coating. Just match your color and apply / No additional topcoats required. Recommend the 300 series blends be crosslinked with either the 612 or 611 crosslinkers

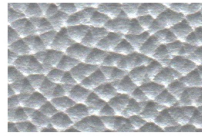
NO.	DISCRIPTION	PRICE PER CONTAINER			
		8 oz.	16 oz.	32 oz.	128 oz.
300	Pre-Matched BLENDS	-	\$35	\$50	\$110
301	Color Match Fee	\$18			
310	White Pigment Blend	\$18	\$28	\$43	\$95
311	Graphite Pigment Blend	\$18	\$28	\$43	\$95
320	Black Pigment BLEND	\$18	\$28	\$43	\$95
330	Yellow Oxide Pigment Blend	\$18	\$28	\$43	\$95
334	Lemon Yellow Pigment Blend	\$25	\$40	\$50	\$110
340	Tangerine Pigment Blend	\$25	\$40	\$50	\$110
341	Orange Pigment Blend	\$25	\$40	\$50	\$110
350	Red Oxide Pigment Blend	\$18	\$28	\$43	\$95

NO.	DISCRIPTION	PRICE PER CONTAINER			
		8 oz.	16 oz.	32 oz.	128 oz.
352	Scarlet Pigment Blend	\$20	\$35	\$50	\$110
354	Bright Red Pigment Blend	\$20	\$35	\$50	\$110
355	Ruby Pigment Blend	\$25	\$40	\$55	\$120
356	Burgundy Pigment Blend	\$20	\$35	\$50	\$110
358	Brick Pigment Blend	\$25	\$40	\$55	\$120
360	Purple Pigment BLEND	\$20	\$35	\$50	\$110
370	Blue Pigment Blend	\$20	\$35	\$50	\$110
380	Green Pigment Blend	\$20	\$35	\$50	\$110
385	Dark Brown Pigment Blend	\$18	\$28	\$43	\$95

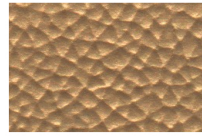
## 300 SERIES METALLIC PIGMENT BLENDS



**390**  
SILVER



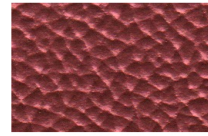
**392**  
PEARL



**394**  
GOLD



**396**  
BRONZE



**398**  
COPPER

### 300 SERIES METALLIC BLENDS

The 300 series metallic are a correctly blended system designed as a “Ready-to-Spray” coating. Just match your color and apply / No additional topcoats required. Recommend the 300 series blends be crosslinked with either the 612 or 611 crosslinkers

PRODUCT NO.	DISCRIPTION	PRICE PER CONTAINER	
		8 oz.	32 oz.
<b>390</b>	Silver Metallic Blended with Patent Leather Gloss <i>Ready to Spray</i>	\$20	\$50
<b>392</b>	Pearl Metallic Blended with Patent Leather Gloss <i>Ready to Spray</i>	\$20	\$50
<b>394</b>	Gold Metallic Blended with Patent Leather Gloss <i>Ready to Spray</i>	\$20	\$50
<b>396</b>	Bronze Metallic Blended with Patent Leather Gloss <i>Ready to Spray</i>	\$20	\$50
<b>398</b>	Copper Metallic Blended with Patent Leather Gloss <i>Ready to Spray</i>	\$20	\$50

## 302 SERIES ST COLORS



## 302 SERIES ST PIGMENT BLENDS

302 STARTER COLORS (*ST COLORS*) are a set of 14 automotive grays & tans carefully selected to be able to make easy adjustments by intermixing them and/or adding some additional pigments to get the desired color. A swatch ring (#974) of these colors are available so you can hold them up to whatever you are matching and choose the best colors to **START** with.

NO.	DISCRIPTION	PRICE PER CONTAINER		
		16oz.	32oz.	128oz.
302-01	ST-01 Pigment Blend	\$35	\$50	\$110
302-02	ST-02 Pigment Blend	\$35	\$50	\$110
302-03	ST-03 Pigment Blend	\$35	\$50	\$110
302-04	ST-04 Pigment Blend	\$35	\$50	\$110
302-05	ST-05 Pigment BLEND	\$35	\$50	\$110
302-06	ST-06 Pigment Blend	\$35	\$50	\$110
302-07	ST-07 Pigment Blend	\$35	\$50	\$110

NO.	DISCRIPTION	PRICE PER CONTAINER		
		16 oz.	32oz.	128oz.
302-08	ST-08 Pigment Blend	\$35	\$50	\$110
302-09	ST-09 Pigment Blend	\$35	\$50	\$110
302-10	ST-10 Pigment Blend	\$35	\$50	\$110
302-11	ST-11 Pigment Blend	\$35	\$50	\$110
302-12	ST-12 Pigment Blend	\$35	\$50	\$110
302-13	ST-13 Pigment Blend	\$35	\$50	\$110
302-14	ST-14 Pigment Blend	\$35	\$50	\$110

## 400 SERIES BASECOAT PIGMENT BLENDS



### 400 SERIES PIGMENT BLENDS

The 400 series pigment line is a correctly blended Basecoat system designed for maximum coverage and feel. Pigments are blended with the **“600 Flexible Basecoat System”**. Colored basecoats **MUST** be top coated all the time otherwise failure will result. Crosslinking base coats are not necessary.

NO.	DISCRIPTION	PRICE PER CONTAINER			
		8 oz.	16 oz.	32 oz.	128 oz.
400	Pre-Matched BLENDS <i>Pre-matched colors see page 28</i>	-	\$35	\$50	\$110
401	Custom Color Match Fee	Per Color Match \$18.00			
410	White Base Coat Blend	\$15	\$25	\$40	\$120
411	Graphite Base Coat Blend	\$15	\$25	\$40	\$120
420	Black Base Coat Blend	\$15	\$25	\$40	\$120
430	Yellow Base Coat Blend	\$15	\$25	\$40	\$120
434	Lemon Yellow Base Coat Blend	\$25	\$45	\$65	\$175
440	Tangerine Base Coat Blend	\$25	\$45	\$65	\$175
441	Orange Base Coat Blend	\$25	\$45	\$65	\$175
450	Red Oxide Base Coat Blend	\$15	\$25	\$40	\$120

NO.	DISCRIPTION	PRICE PER CONTAINER			
		8 oz.	16 oz.	32 oz.	128 oz.
452	Scarlet Base Coat Blend	\$25	\$45	\$65	\$175
454	Bright Red Base Coat Blend	\$25	\$45	\$65	\$175
455	Ruby Base Coat Blend	\$30	\$50	\$70	\$200
456	Burgundy Base Coat Blend	\$25	\$45	\$65	\$175
458	Brick Base Coat Blend	\$30	\$50	\$70	\$200
460	Purple Base Coat Blend	\$25	\$45	\$65	\$175
470	Blue Base Coat Blend	\$25	\$45	\$65	\$175
480	Green Base Coat Blend	\$25	\$45	\$65	\$175
485	Dark Brown Base Coat Blend	\$25	\$45	\$65	-



## PURE DYE COLORANTS

### STARTER KIT



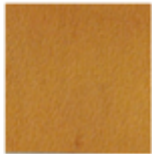
### 494 DYE STARTER KIT

Use the Pure Dyes in basecoats and other specialty coatings. Kit contains: 2oz each...#486 Black, 487 Ochre Yellow, 488 Orange, 489 Bright Red, 490 Red Brown, 491 Dark Brown, 492 Blue, 493 Lemon Yellow. Keep Dye loading to a maximum of 5%. When combining with "C" pigments, keep the combination of the two to a maximum load of 8%. All coatings with Dye in them **MUST** be top coated with a clear crosslinked topcoat

**\$56**



486 BLACK



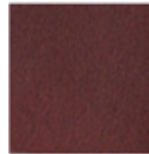
487 OCHRE  
YELLOW



488 ORANGE



489 BRIGHT  
RED



490 RED  
BROWN



491 DARK  
BROWN



492  
BLUE



493 LEMON  
YELLOW

### PURE DYE COLORANTS

Use the Pure Dyes in basecoats and other specialty coatings. Keep Dye loading to a maximum of 5%. When combining with "C" pigments, keep the combination of the two to a maximum load of 8%. All coatings with Dye in them **MUST** be top coated with a clear crosslinked topcoat.

Not recommended for Automotive use / These colorants are not pigments and have lower light fastness properties.

RC PRODUCT NO.	PURE DYE	PRICE PER CONTAINER	
		2 oz.	4 oz.
486	Reorder Pure Dye - BLACK	\$12	\$18
487	Reorder Pure Dye – OCHRE YELLOW	\$12	\$18
488	Reorder Pure Dye - ORANGE	\$12	\$18
489	Reorder Pure Dye – BRIGHT RED	\$18	\$24
490	Reorder Pure Dye – RED BROWN	\$17	\$22
491	Reorder Pure Dye – DARK BROWN	\$15	\$20
492	Reorder Pure Dye - BLUE	\$25	\$42
493	Reorder Pure Dye – LEMON YELLOW	\$12	\$18



## 500 SERIES ANILINE TYPE FINISH DYES

This series of colorants are made up of pure water base dye blended into a lightly resonated urethane design to create two tone effects over an opaque base color The system is a Ready To Use Coating...just color match and apply. Can be applied with spray or wipe on methods. For best performance, use the 400 series basecoats to create the base color needed. These dye coats **MUST** be top coated. Not recommended for automotive use. These colorants are not pigments and have lower light fastness properties.

RC PRODUCT NO.	DISCRIPTION	PRICE PER CONTAINER		
		8 oz.	16 oz.	32 oz.
<b>510</b>	Aniline Dye System - #10 White	\$15	\$25	\$45
<b>511</b>	Aniline Dye System - #15 Black	\$15	\$25	\$45
<b>512</b>	Aniline Dye System - #410 Hansa Yellow	\$25	\$45	\$65
<b>513</b>	Aniline Dye System - #28 Golden Yellow	\$25	\$45	\$65
<b>514</b>	Aniline Dye System - #57 Orange	\$25	\$45	\$65
<b>515</b>	Aniline Dye System - #84 Bright Red	\$25	\$45	\$65
<b>516</b>	Aniline Dye System - #59 Red Brown	\$25	\$45	\$65
<b>517</b>	Aniline Dye System - #24 Dark Brown	\$25	\$45	\$65
<b>518</b>	Aniline Dye System - #62 Blue	\$55	\$75	\$95

